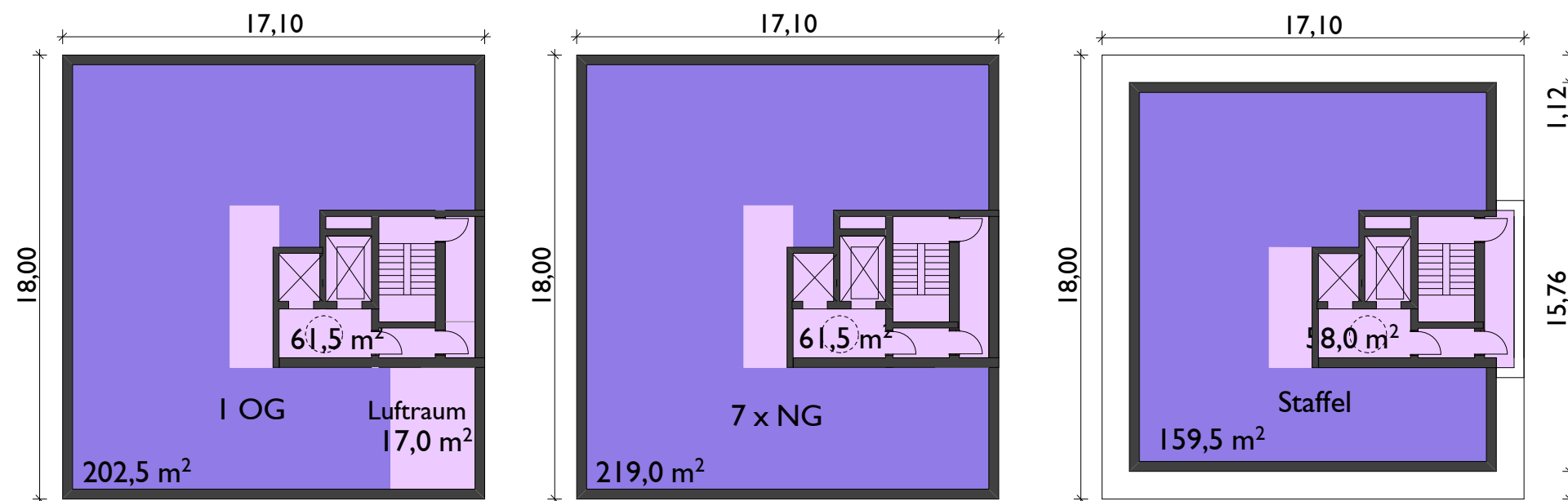
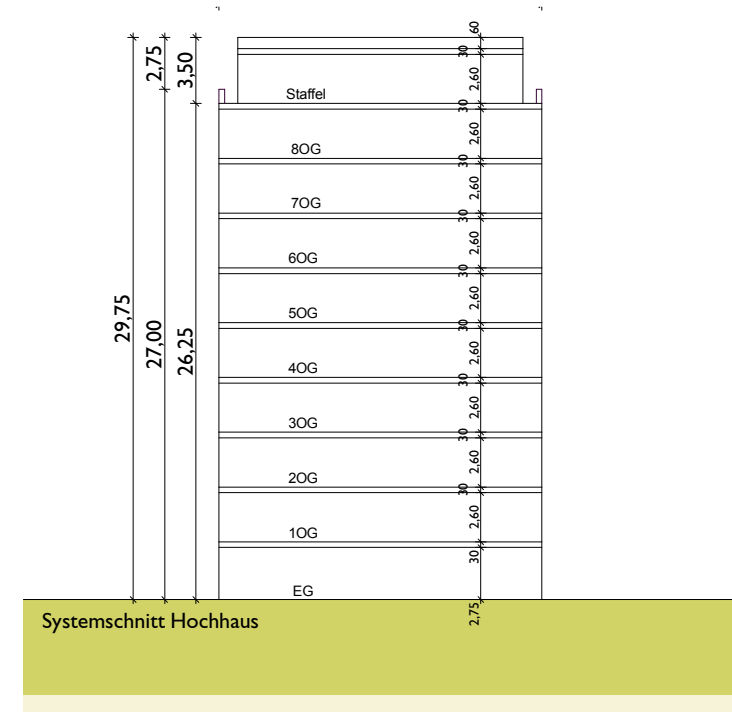


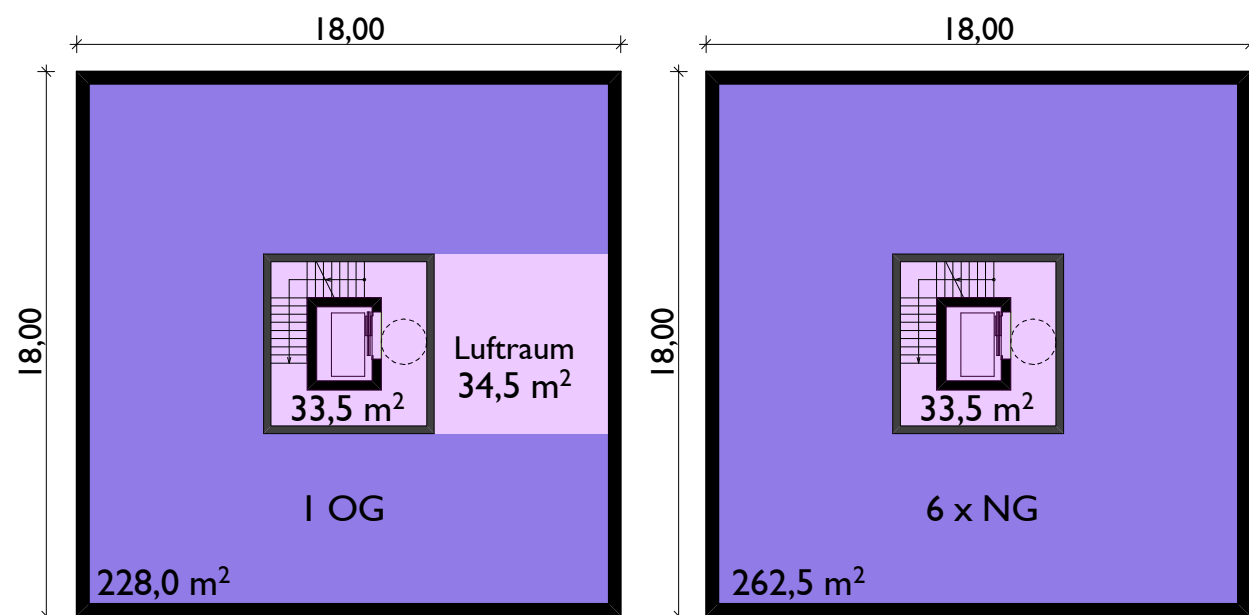
Variante I Hochhaus (10 geschossig)



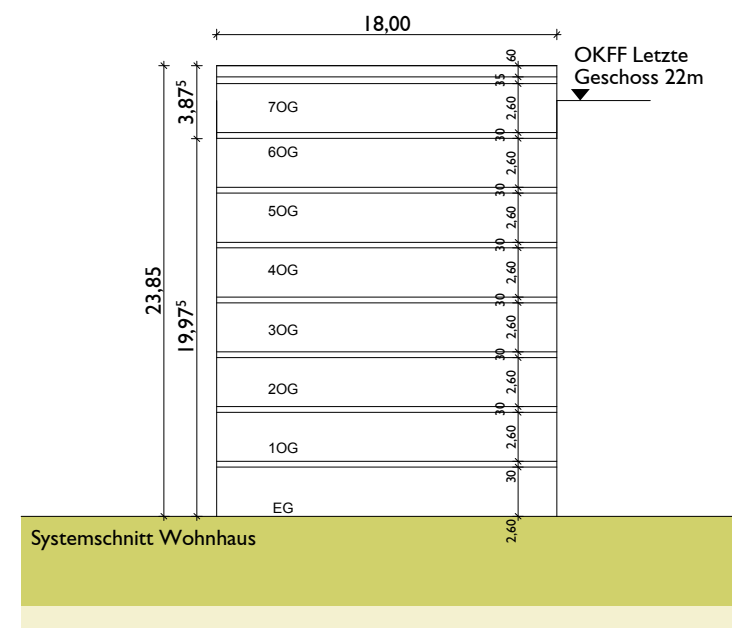
Summe Wohnfläche (ohne EG): 1.895m²
 Summe Verkehrsfläche (ohne EG): 548m²



Variante 2 Wohnhaus (8 geschossig)



Summe Wohnfläche (ohne EG): 1803,0m²
 Summe Verkehrsfläche (ohne EG): 235m²



Entfall von ca. 14 WE (7WE/ Haus)